

# HOW DO I SETUP A CUSTOM SIZE LABEL FOR AN EPSON DOT-MATRIX, TRACTOR-FED PRINTER

Setup for Epson FX-890 printer and Labels Unlimited software

12/01/2011

NOTE: Solution provided below was done on Windows XP Professional, but should apply to other operating systems as well.

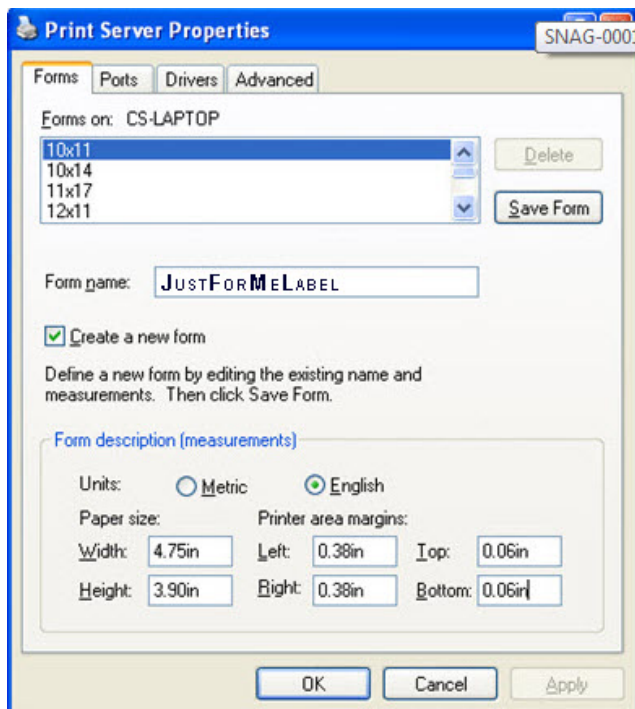
The roll of labels to be used in the tractor feed system were single file on the roll with dimensions of:  
WIDE=4.75" | HEIGHT=3.00" | LEFT MARGIN: 0.38" | RIGHT MARGIN: 0.38" |  
TOP MARGIN: 0.06" | BOTTOM MARGIN: 0.06"

## Step 1: Install the Epson FX-890 printer driver

- The driver for Windows XP 32-bit is **epson10926.exe**. File size is 842 KB. It can be downloaded from here: [http://www.epson.com/cgi-bin/Store/support/supDetail.jsp?BV\\_UseBVCookie=yes&oid=23730&infoType=Downloads](http://www.epson.com/cgi-bin/Store/support/supDetail.jsp?BV_UseBVCookie=yes&oid=23730&infoType=Downloads) (Obviously, if the link does not work anymore, then search and find the appropriate driver for your printer and operating system)

## Step 2: Create a CUSTOM FORM in Printers and Faxes | Server Properties

- Open the **Printers and Faxes** window | Click on **File**, then select **Server Properties**.
- On the **Forms** tab, place a check beside **Create a new form** | Enter name for the new form, i.e. **JustForMeLabel**.
- Under **Form description** enter the measurements shown below.
- When you have entered the specifications the window should look like this (these are NOT the actual dimensions of the label [YET!!!], enter them as noted below ... specifically the HEIGHT. This is a print driver coding related issue):



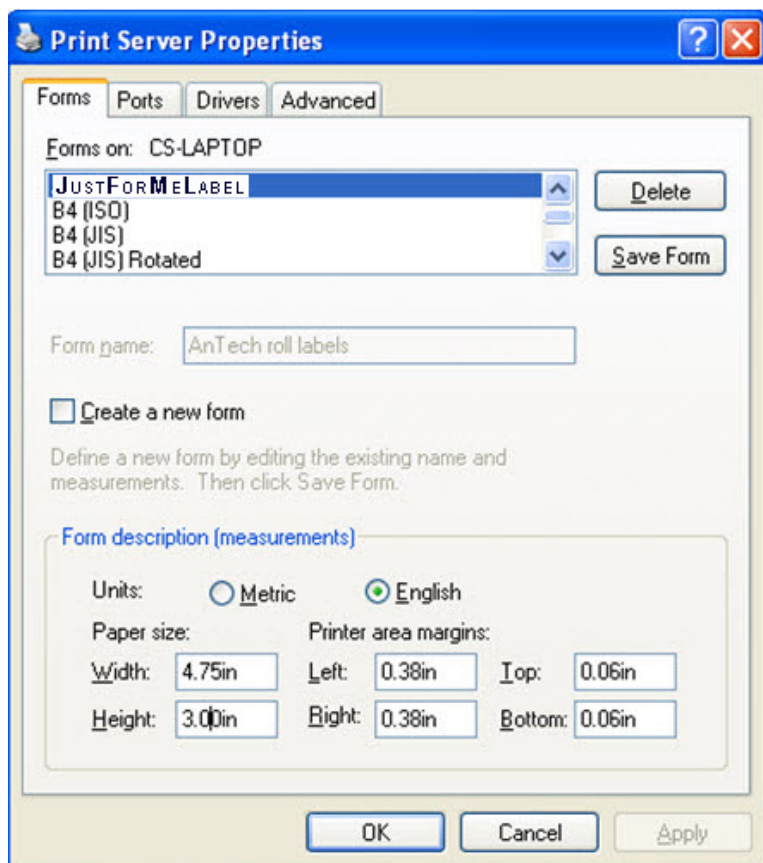
- Click **Save Form** to add the new form to the list, then click **Close**.

### Step 3: Select the CUSTOM FORM “JustForMeLabel” just created in Printing Preferences

- Open the **Printers and Faxes** window.
- Right-click on the **Epson FX-890** printer and select **Printing Preferences**.
- Click the **Advanced** button.
- In the **Paper Size** scroll-down menu select the “**JustForMeLabel**” custom form you just created
- Click **OK** to close the advanced features window.
- Click **Apply**.
- Click **OK**.

### Step 4: Modify CUSTOM FORM “JustForMeLabel” in Printers & Faxes | Server Properties

- Again open the **Printers and Faxes** window.
- Click on **File**, then select **Server Properties**.
- On the **Forms** tab, scroll down the list of existing forms until you come to **JustForMeLabel** and click one time on the name to highlight it.
- In the **Height** box change the measurement from 3.90in to **3.00in**. (**THIS is the actual height of the LABEL**)
- After you have made the change the window should look like this:



- Click **Save Form**.
- Click **Close**.

## Step 4: Install Labels Unlimited software (in theory this should work with most other label programs as well).

- During the installation you will have the option to install clip art and fonts. Check or uncheck those options as desired (if you don't need those extras be sure all are unchecked).
- At the end of the installation you will be prompted to register the product. On the first registration screen just click the **white X** in the upper right-hand corner to close the window. When the second registration window opens click **OK** to close that window.

## Step 5: Create a new custom label job using Labels Unlimited software

- Launch Labels Unlimited.
- Click the **Create a New Job** button. This will open the Pre-defined Format window.
- In the **Pre-defined Format** window, choose **New Format**.
- Under the **General** tab fill in all required fields as shown below.
- When you have input all the specifications the window should look like this:

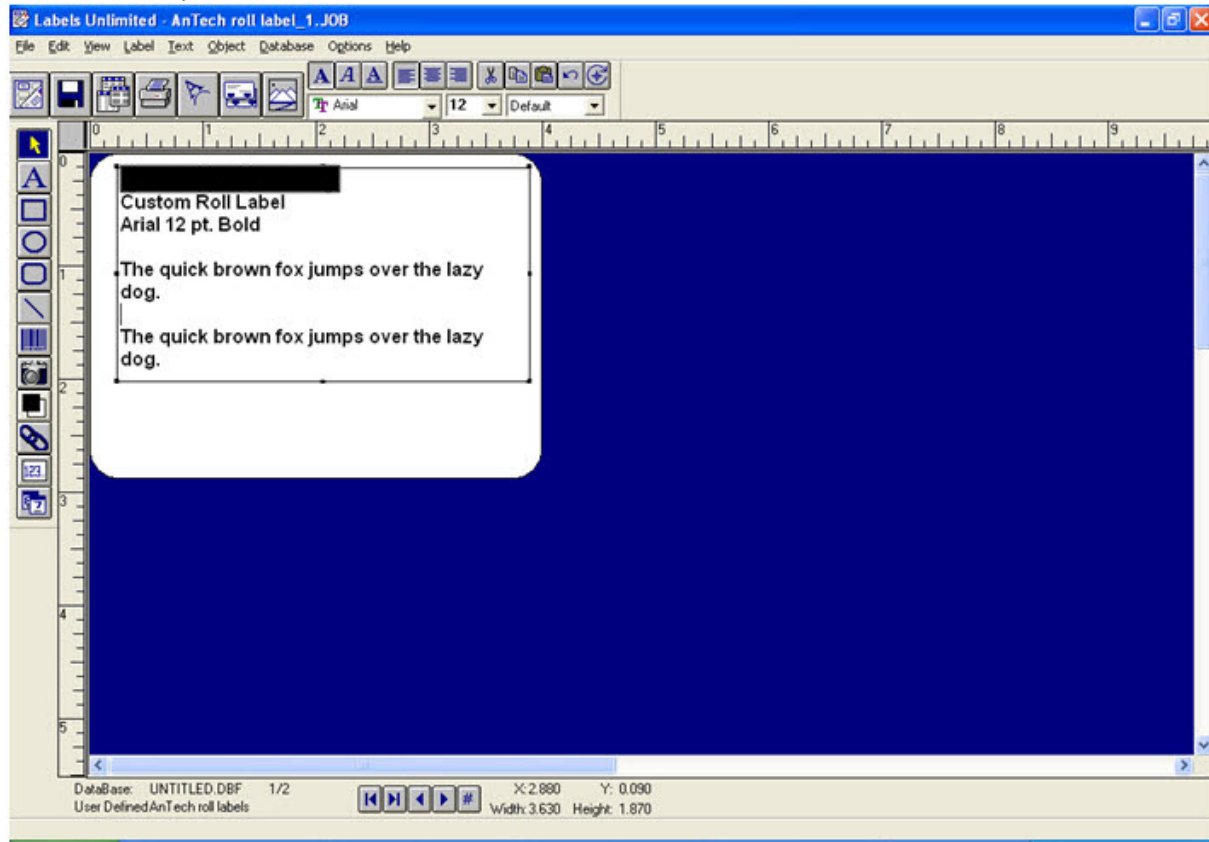
The screenshot shows the 'New Format' dialog box with the following settings:

- Format Name:** JUSTFORMELABEL
- Unit of Meas.:** Inches
- Format Use:** General
- Save in:** User Defined
- Page Dimensions:**
  - Laser  Dot Matrix
  - Width:** 4.750
  - Length:** 3.000
- Margin:**
  - Left:** 0.000
  - Right:** 0.100
  - Top:** 0.000
  - Bottom:** 0.100
- Label Dimensions:**
  - Width:** 4.000
  - Height:** 2.875
  - Round Corners  Square Corners  Round
- Page Layout:**
  - Auto Separation
  - # Across:** 1
  - # Down:** 1
  - Horiz.:** 0.000
  - Vert.:** 0.000

- Note: It is not necessary to make any modifications under the **Non Printing Area** tab.
- Click **Save** to close that dialog box.
- Click **OK**. This will take you to the main label design screen.

## Step 6: Design the new custom label

- Click the **Text Tool** (button on left side marked with large **A**).
- Starting near the upper left-hand corner of the label, click and drag downward and to the right to create a text box.
- Set the desired **default font, point size and other parameters** for the label text.
- Double-click inside the text box.
- Type the desired text.
- Click **File | Save Job** and input a filename and location for the file.
- Below is a sample of a new label:



- Print the label by clicking the **Print** button or by pressing **Ctrl-P**.
- Now, you can print labels without having to reset the paper alignment for each label.
- Process complete.